

THE GREAT SCHOLARS SERIES

Jewish Heroes and Heroines

Hebrew Union College-Jewish Institute of Religion and Florida Atlantic University present a series of eight lectures exploring the great men and women who have changed the course of Jewish life through their impact on literature, music, politics, philosophy, government, entertainment, and business.

JANUARY 2007

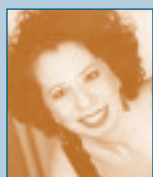


16 | 17
The Jewish Supreme Court Justices

PROFESSOR BENTON BECKER, Professor of Constitutional Law, St. Thomas Law School/FAU, served in the U.S. Department of Justice as Counsel to President Gerald Ford. This lecture will explore the history of Jewish membership on the Supreme Court, and the accomplishments of Jewish Supreme Court justices.



23 | 24



Musical Portrayals of Jewish Heroes and Heroines

CANTOR BRUCE L. RUBEN, PH.D., Director of the School of Sacred Music, HUC-JIR/New York, and **JOYCE ROSENZWEIG**, Pianist/Conductor and Artist in Residence, School of Sacred Music, HUC-JIR/New York, along with students from the HUC-JIR School of Sacred Music, will present a lecture-recital exploring how major Jewish figures have inspired composers throughout the ages.



30 | 31
Profiles in American Jewish Courage

DR. GARY ZOLA, Associate Professor of the American Jewish Experience and Executive Director of the Jacob Rader Marcus Center of the American Jewish Archives, HUC-JIR/Cincinnati, will examine the careers of four individuals personifying American Jewish courage: Rabbi Isaac Meyer Wise, the architect of American Judaism; Penina Moise, a pioneering poet of American Judaism; Ray Frank, the "Girl Rabbi of the Golden West;" and Rabbi Perry Nussbaum, a Southern rabbi who ministered to the Freedom Riders during the 1960s.

FEBRUARY 2007



6 | 7
In Search of Abraham Joshua Heschel

RABBI MICHAEL MARMUR, PH.D., Dean of HUC JIR/ Jerusalem, will discuss the varied and sometimes opposing ways in which Heschel has been understood, in order to arrive at a balanced picture of this influential and complex individual who was one of the greatest Jewish philosophers of the 20th century.



13 | 14
Jewish Thinkers Since Auschwitz

DR. ALAN L. BERGER, Raddock Eminent Scholar Chair in Holocaust Studies/FAU, is co-editor (with his wife, Naomi Berger) of *Second Generation Voices: Reflections by Children of Holocaust Survivors and Perpetrators*. Dr. Berger will discuss three distinct responses to the theological upheaval caused by the Holocaust, examining the theologies of Eliezer Berkowitz, Richard Rubenstein, and Elie Wiesel.



20 | 21
Rosa Sonnenschein (1847-1932) and American Jewry: Was She the Oprah of Her Day?

RABBI CAROLE BALIN, PH.D., Professor of Jewish History, HUC-JIR/New York, will explore the contents, illustrations, and advertisements of "The American Jewess," a magazine founded by the flamboyant and intelligent Rosa Sonnenschein in 1895, revealing a snapshot of Jewish history in late nineteenth-century America.



27 | 28
Israeli Heroes I Have Known

AMBASSADOR ASHER NAIM, veteran of Israel's Diplomatic Services/FAU, was involved in many key diplomatic missions, including Operation Solomon in Ethiopia, the relocation of Russian Jews through Finland to Israel, and the promotion of economic and scientific ties with South Korea. Ambassador Naim will relate personal accounts about David Ben Gurion, Shimon Peres, Yitzhak Rabin, Golda Meir, and Yitzhak Shamir, presenting a new perspective on the Israeli leaders who have shaped the destiny of their nation and the rest of the world.

\$55 Lifelong Learning Society members
\$75 non-members

Students are encouraged to become LLS members for a \$30 annual fee (membership is valid for one year). Members receive priority registration.

Boca Raton Campus | TUESDAY
1:30-3:15 p.m.
Barry and Florence Friedberg
Lifelong Learning Center

MacArthur Campus, Jupiter | WEDNESDAY
2:45-4:30 p.m.
Maltz Auditorium, Elinor Bernon Rosenthal
Lifelong Learning Society Complex

MARCH 2007



6 | 7
Heroic Figures and Legacies in the Bible

DR. FREDERICK GREENSPAHN, Gimmelstob Eminent Scholar in Judaic Studies/FAU, was ordained at HUC-JIR and received his Ph.D. in Biblical Studies from Brandeis University. This lecture will reveal that although the concept "hero" is of Greek origin, there are parallels in the Bible, some of which may actually have been influenced by Greek thinking. Looking for biblical heroes can teach us a great deal about Israel's underlying values and have profound consequences for our understanding of how Western thought and culture developed.

Please call 561.297.3171 (FAU/Boca Raton) or 561.799.8667 (FAU/Jupiter) for the Lifelong Learning Society winter catalogue and registration materials. For information about HUC-JIR's faculty and programs, please contact: Gerda Klein, 561.738.2806, gklein@huc.edu.

EXHIBITIONS COURTESY OF THE HEBREW UNION COLLEGE-JEWISH INSTITUTE OF RELIGION MUSEUM IN NEW YORK.

ALIZA OLMERT: TIKKUN

November 5-December 17, 2006

The Nathan D. Rosen Museum at the Adolph and Rose Levis Jewish Community Center | 9801 Donna Klein Boulevard, Boca Raton

Renowned Israeli conceptual artist Aliza Olmert uses egg shells as a metaphor for the fragility of existence, the obstacles to survival, and the imperative to sustain life.

Olmert creates an existential *tikkun*—the Jewish charge to heal and restore balance in the world, through the mending of the shattered pieces in her haunting works. As a daughter of survivors of the Holocaust and as an artist whose life has been shaped by Israel's struggle for security, Olmert's works allude to the emotional toll of successive wars and ongoing terror, and manifest the ineffable strengths that have ensured survival.



HOURS:
Monday through Thursday 12-5 p.m.
Friday and Sunday 12-4 p.m.

ADMISSION: FREE

GROUP TOUR APPOINTMENTS:
School groups, family education groups, and adult education groups are encouraged to schedule appointments for docent-guided tours. Call: 561.852.3276

DIRECTIONS:
Located off Glades Road and 95th Avenue South between Lyons Road and U.S. 441.

WALDSEE - 1944

January 2-March 30, 2007

Hibel Museum of Art | John D. MacArthur Campus
Florida Atlantic University | 5353 Parkside Drive, Jupiter, Florida

WALDSEE-1944 is an exhibition that commemorates the annihilation of Hungarian Jewry during the summer of 1944, when Jews deported by the Nazis to their deaths at Auschwitz were required to write deceptive postcards from "Waldsee" to their families, reassuring them that all was well. Seventy international artists have created their own postcards to commemorate the Hungarian Holocaust, each revealing different aspects of loss, suffering, compassion, and memory.

HOURS:
Tuesday through Saturday 11 a.m.- 4 p.m.
Sunday 1-4 p.m.

ADMISSION: FREE

GROUP TOUR APPOINTMENTS:
School groups, family education groups, and adult education groups are encouraged to schedule appointments for docent-guided tours. Call: 561.622.5560



DIRECTIONS:
From I-95: Take Exit 83 (Donald Ross Road). Travel East and turn left onto Parkside Drive. Turn right at the first stop sign onto University Blvd. Free parking is available in the garage on the left. The museum is across from Roger Dean Stadium through the FAU Campus Gateway.

From Florida Turnpike: Take Jupiter exit and turn left at light; follow signs to I-95 South and follow directions above.

OPENING RECEPTION: Sunday, November 5, 2-4 p.m.

RSVP: Gerda Klein 561.738.2806 | gklein@huc.edu or
Helene Yentis 561.852.3276 | heleney@bocafed.org

OPENING RECEPTION: Sunday, February 18, 2-4 p.m.

RSVP: Gerda Klein 561.738.2806 | gklein@huc.edu or
Nancy Walls 561.622.5560 | Nancy@hibelmuseum.org

THE ART OF AGING

March 27–September 23, 2007

Jewish Museum of Florida | 301 Washington Avenue, Miami Beach, Florida



DIRECTIONS:

From Miami Beach, take A1A/Collins Ave. S. to 3rd St. Turn right and go one block to Washington Ave. Museum is on your right at the corner of Washington and 3rd.

From I-95 N/S bound, exit I-395 E. The causeway ends at Alton Road and becomes 5th Street. Continue east on 5th to the 6th traffic light (Washington Ave.) and turn right. Museum is two blocks S. on your left at 301 Washington Ave.

This exhibition explores the process of the lifelong aging journey as it affects the dynamics of human relationships, creativity, memory, continuity, loss, and growth.

Through painting, sculpture, photography, video, and mixed media, artists of all generations explore the effects of time on human experience. They explore issues of faith and culture, finding meaning in the universal aspects of maturation as it impacts on each of our own lives, our families, and our communities.

HOURS:

Tuesday through Sunday 10 a.m.–5 p.m.
Closed Mondays and Civil and Jewish Holidays

ADMISSION:

Adults \$6, senior/student \$5, family \$12, school group \$2.50 per child, adults in groups of 20 or more \$5 (group reservation required). Museum members and children under six are free.
There is no admission fee on Saturdays.

GROUP TOUR APPOINTMENTS:

School groups, family education groups, and adult education groups are encouraged to schedule appointments for docent-guided tours.
Contact Mina: 305.672.5044, ext. 19 or e-mail: education@jewishmuseum.com.



OPENING RECEPTION: Monday, March 26, 6 p.m.

TO ATTEND: please call Roberta 305.672.5044, ext. 10 Mention GREAT SCHOLARS SERIES to receive special entrance rate.

Hebrew Union College-Jewish Institute of Religion
8788 Shoal Creek Lane
Boynton Beach, FL 33437

NONPROFIT ORG
US POSTAGE
PAID
WEST PALM BEACH FL
PERMIT NO. 571

THE GREAT SCHOLARS SERIES

Jewish Heroes and Heroines

**Lifelong Learning Society,
Florida Atlantic University**
and
**Hebrew Union College-
Jewish Institute of Religion**

**HUC-JIR Exhibitions at the
Nathan D. Rosen Museum at the
Adolph and Rose Levis Jewish Community Center**

**The Hibel Museum of Art
Florida Atlantic University**
and
**The Jewish Museum
Miami**

VISIT OUR WEBSITE at www.huc.edu

Lifelong Learning Society, Florida Atlantic University and Hebrew Union College-Jewish Institute of Religion

THE GREAT SCHOLARS SERIES

Jewish Heroes and Heroines

JANUARY

16 | 17 PROFESSOR BENTON BECKER
The Jewish Supreme Court Justices

23 | 24 CANTOR BRUCE RUBEN, PH.D.
JOYCE ROSENZWEIG

**Musical Portrayals of
Jewish Heroes and Heroines**

30 | 31 DR. GARY ZOLA
Profiles in American Jewish Courage

FEBRUARY

6 | 7 RABBI MICHAEL MARMUR,
PH.D.

In Search of Abraham Joshua Heschel

13 | 14 DR. ALAN L. BERGER

Jewish Thinkers Since Auschwitz

20 | 21 RABBI CAROLE BALIN, PH.D.

**Rosa Sonnenschein (1847–1932) and
American Jewry: Was She the Oprah
Of Her Day?**

27 | 28 AMBASSADOR ASHER NAIM
Israeli Heroes I Have Known

MARCH

6 | 7 DR. FREDERICK GREENSPAHN

**Heroic Figures and Legacies
In the Bible**