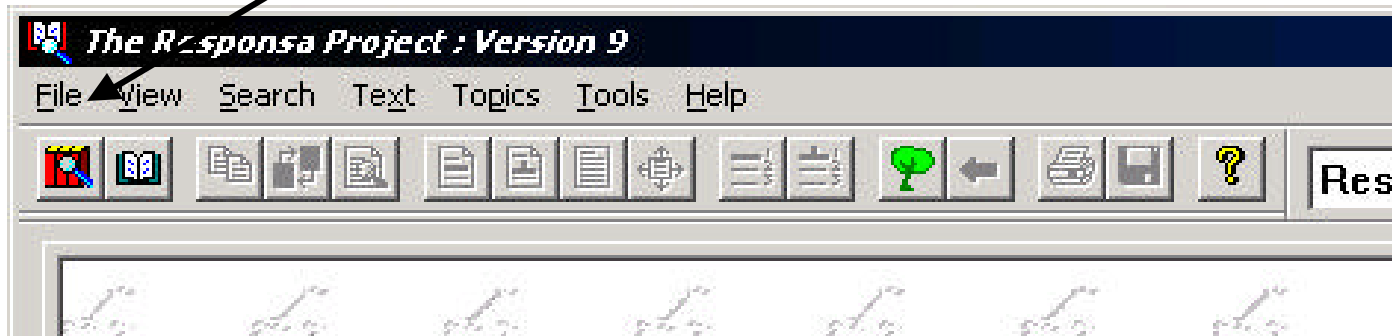


Using the Bar Ilan Responsa Project

The Frances-Henry library has a networked version of the Bar Ilan Responsa project CD-ROM. It is available from any computer on the Los Angeles campus network. We also have the CD-ROM and manual available to check out for use in the library.

To begin, click on the search button on the top left corner (magnifying glass over 3 red books). This will give you a search screen (of the type last used).

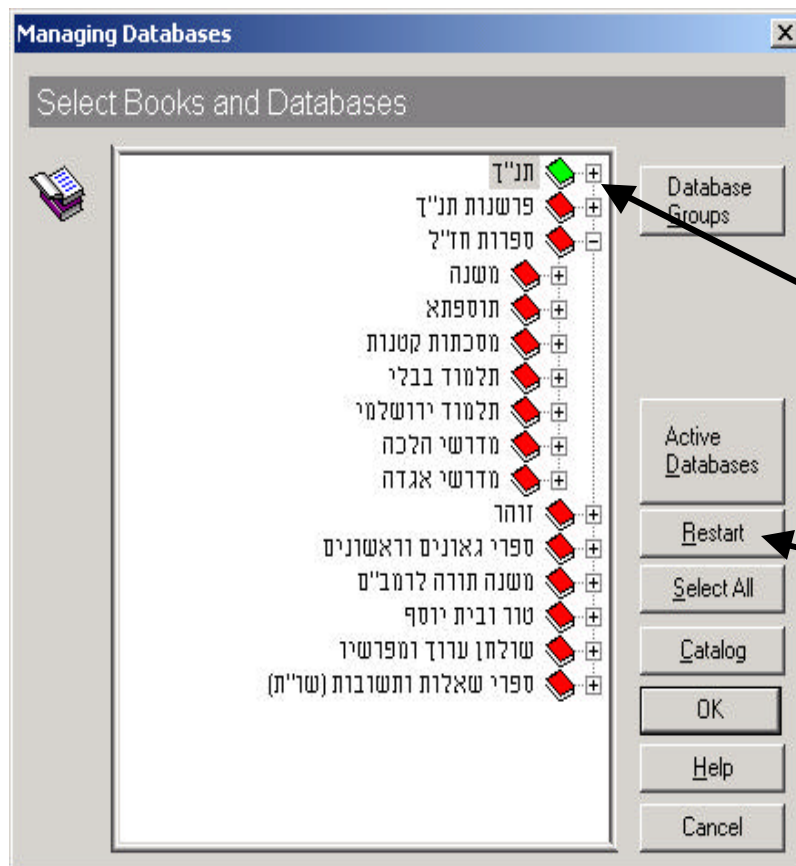


Selecting the text(s)

Before you begin a search, choose the texts you want the program to search. Click on the bottom left button “choose databases.”

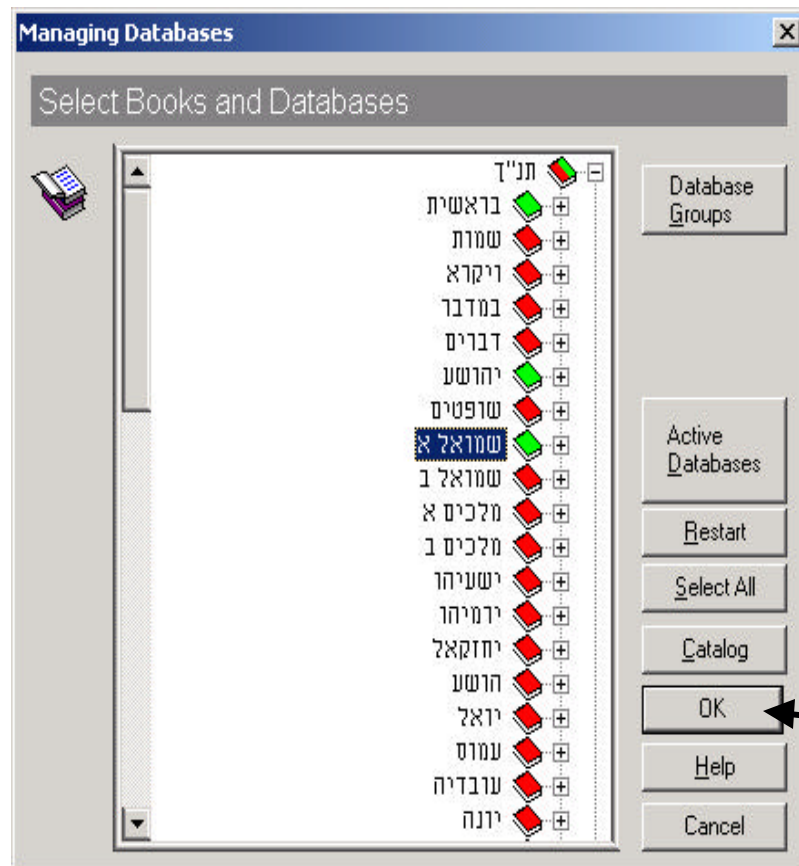


Selecting the text(s)



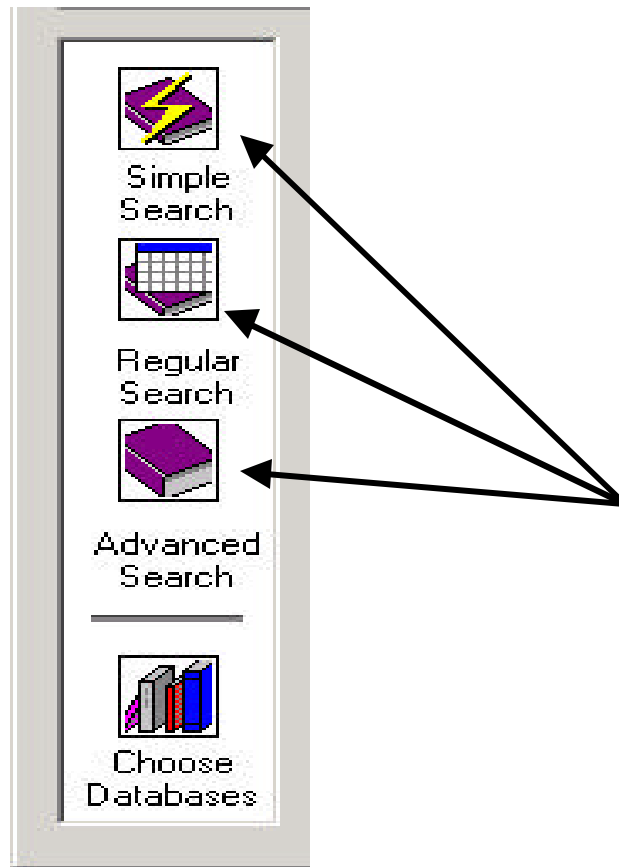
The Responsa Project may already have some databases chosen. This will be indicated by the green icon next to the text name. To clear the selections, click on the “restart” button.

Selecting the text(s)



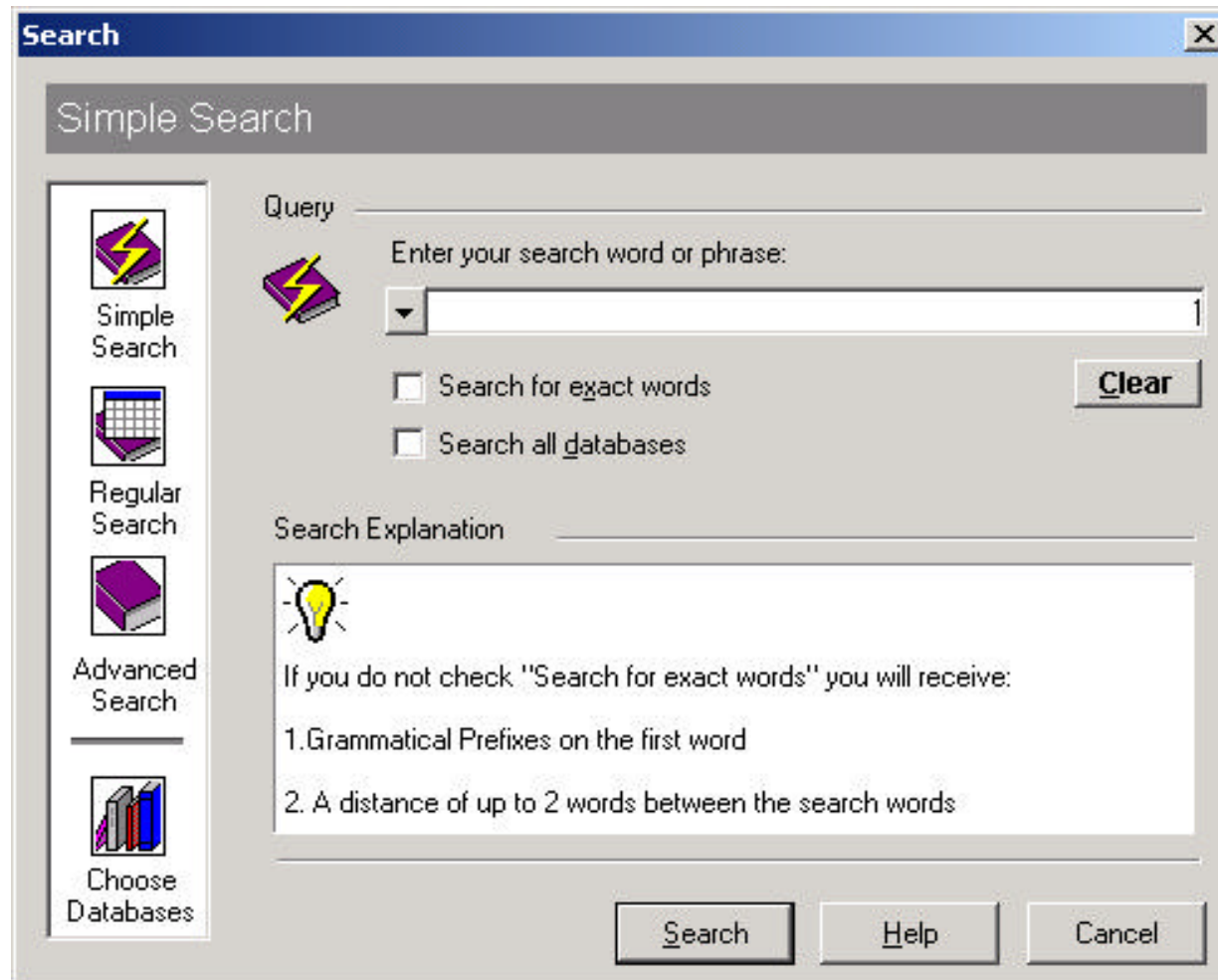
If you want to search just part of a text, clicking on the “+” sign will give you smaller portions to choose. You may select as many texts as you want. Click on “OK” when you are done.

Doing the search

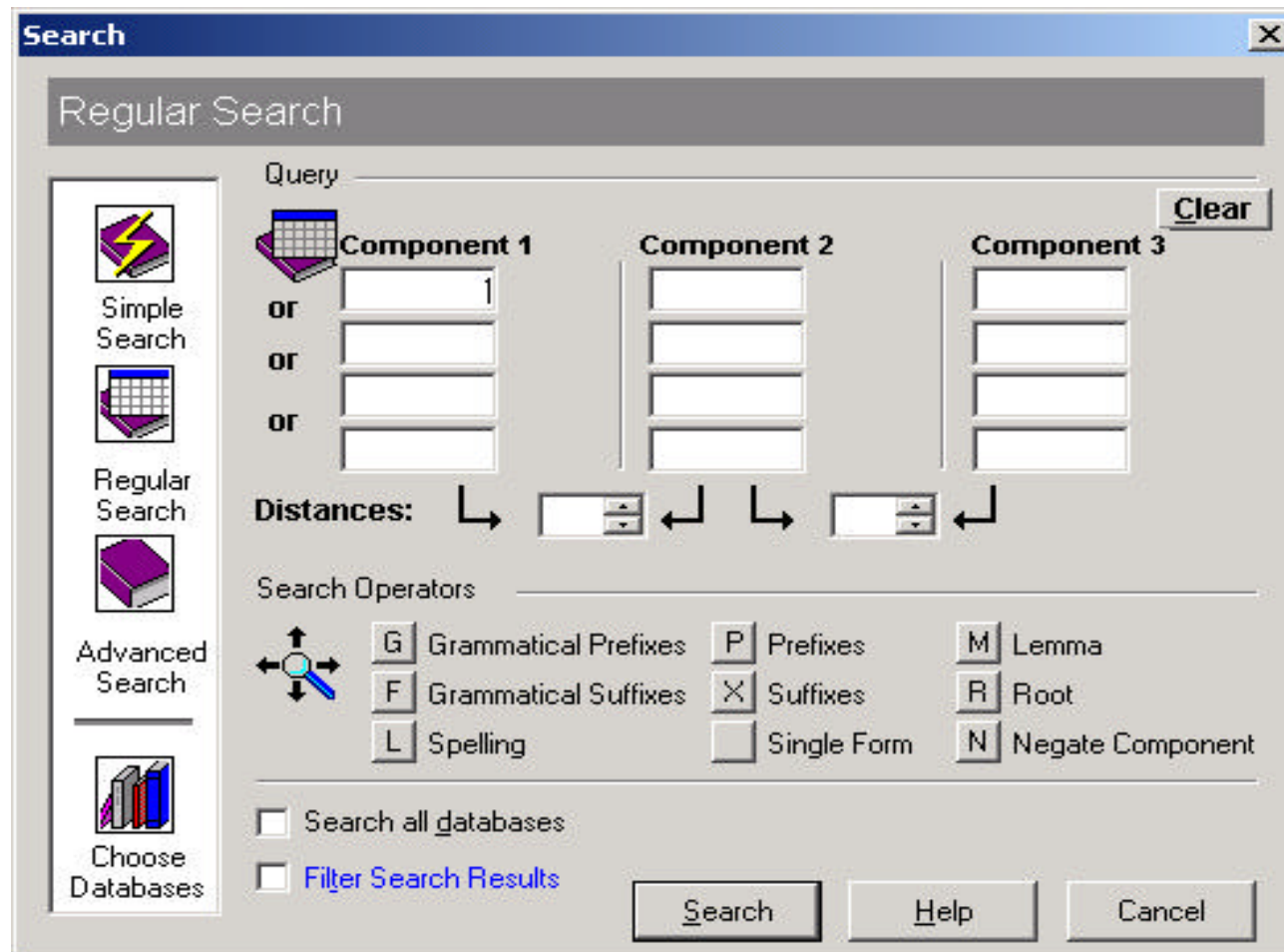


There are 3 different search screens available: simple, regular, and advanced. Choose one by clicking on the appropriate icon on the left side of the screen.

Doing the search – simple search



Doing the search – regular search



Doing the search – regular search

When you put a word in the component box, the program will search for that exact form of the word. You can include other forms by clicking on the letter boxes under “Search operators”



Doing the search- regular search



For example, searching for the word בית

operator

will find

[exact form]

בית

g (grammatical prefixes)

הבית, לבית, ומבית, בית, etc.

f (grammatical suffixes)

ביתה, ביתו, ביתך, בית

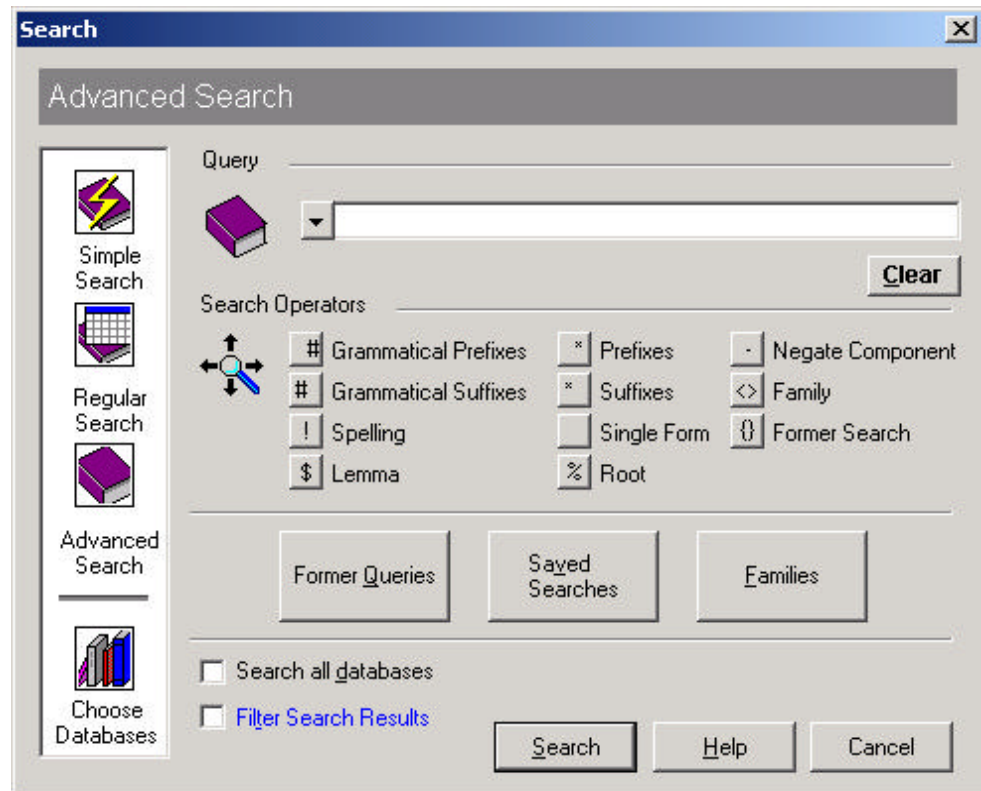
p (all prefixes) as in g, plus תשבית, ותרבית, etc.

x (all suffixes) as in f, plus ביתוסים, ביתר, etc.

You can use more than one operator on a search. You may also use “r” to search for any form of the root or the “n” to exclude a word.

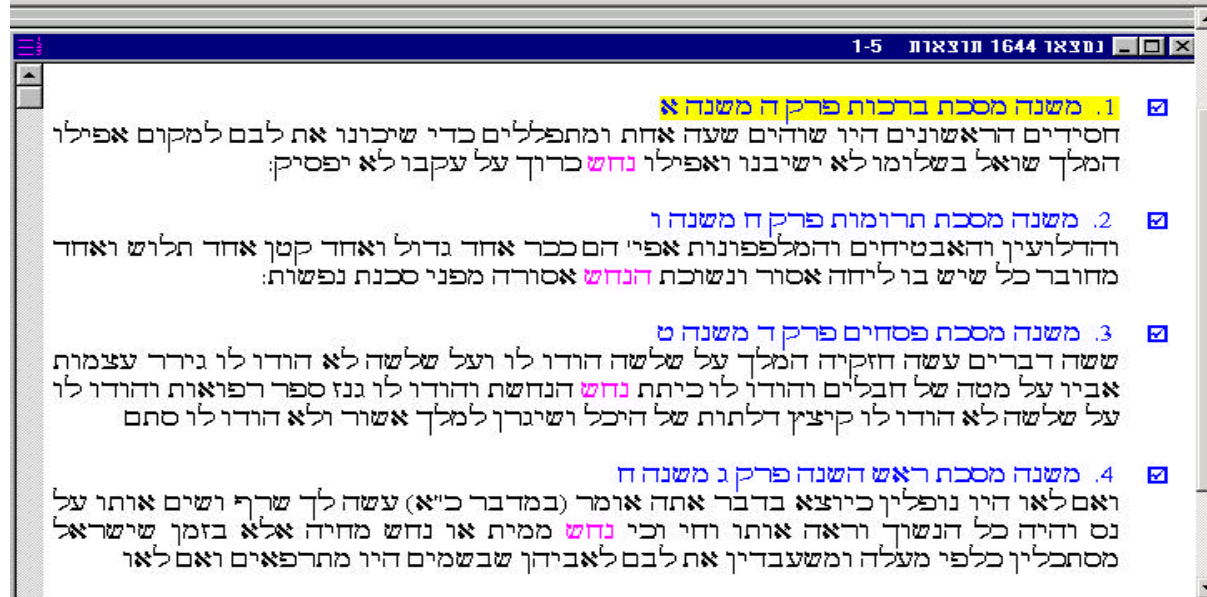
Doing the search - advanced

Type in the word with the appropriate symbol for the search operation. See the manual for more instructions.



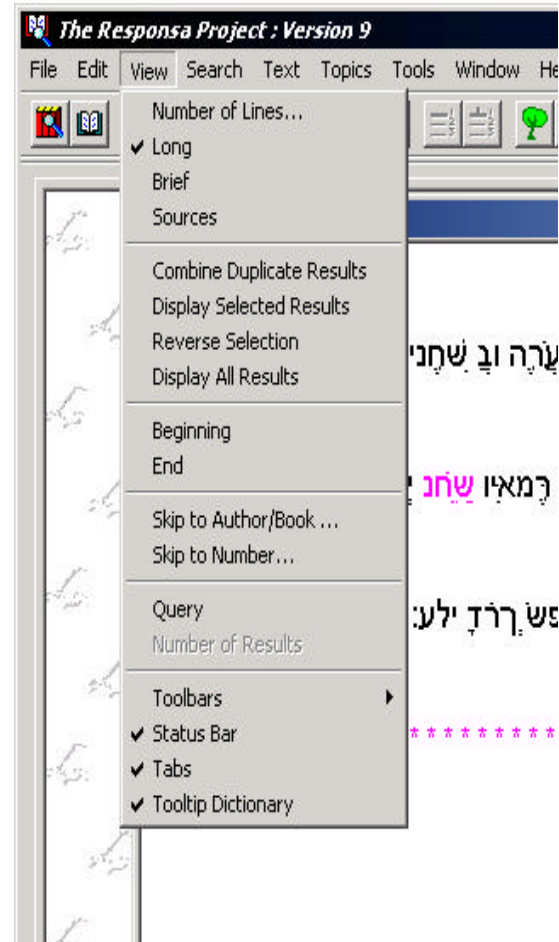
Viewing the results

The program will give you a list of results with the book, portion, and verse or page in the first line and the word or phrase in context in the next two lines.



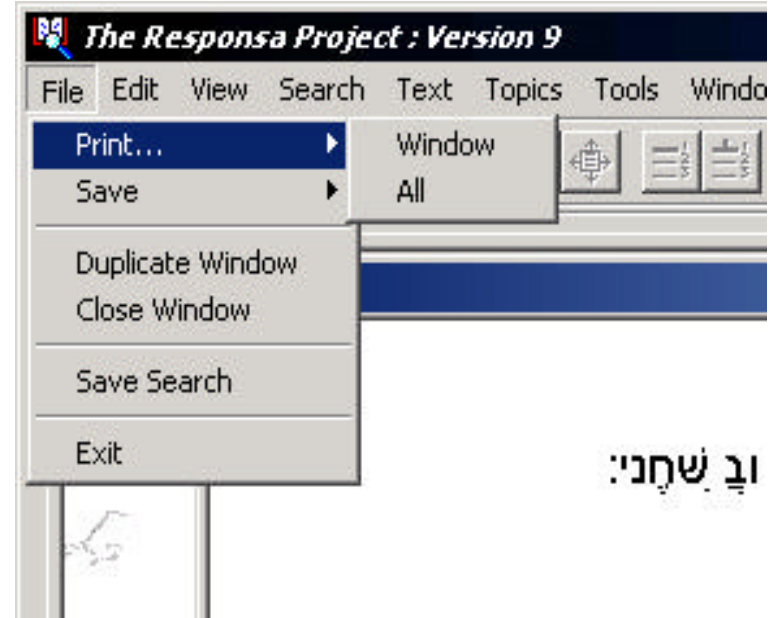
Viewing the results

If you click on the “View” menu, you can choose to see the list with brief listings (source, plus 1 line of text), or just a list of sources.

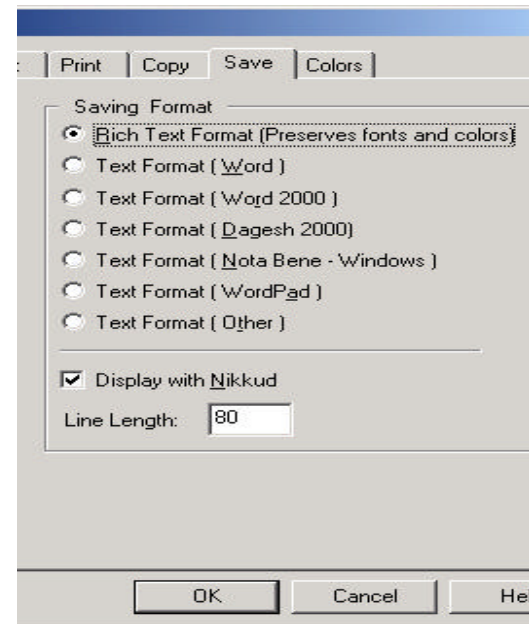
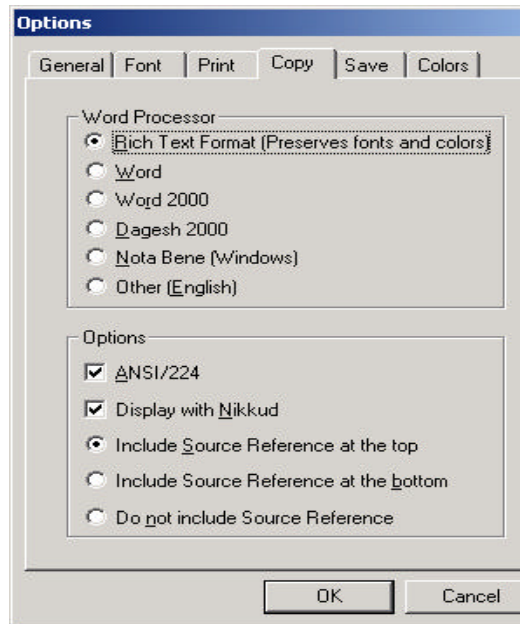


Printing

To print a complete list of results, click on “File” then “Print” and then select either “Window” or “All.”
If it does not print correctly, try going to “Tools” then “Options” for some print options.



Copying and Saving



There are many options for copying and saving texts from this program. Click on “Tools” then “Options” then either “Copy” or “Save.” You may have to try a few different options to find one that works for your setup.